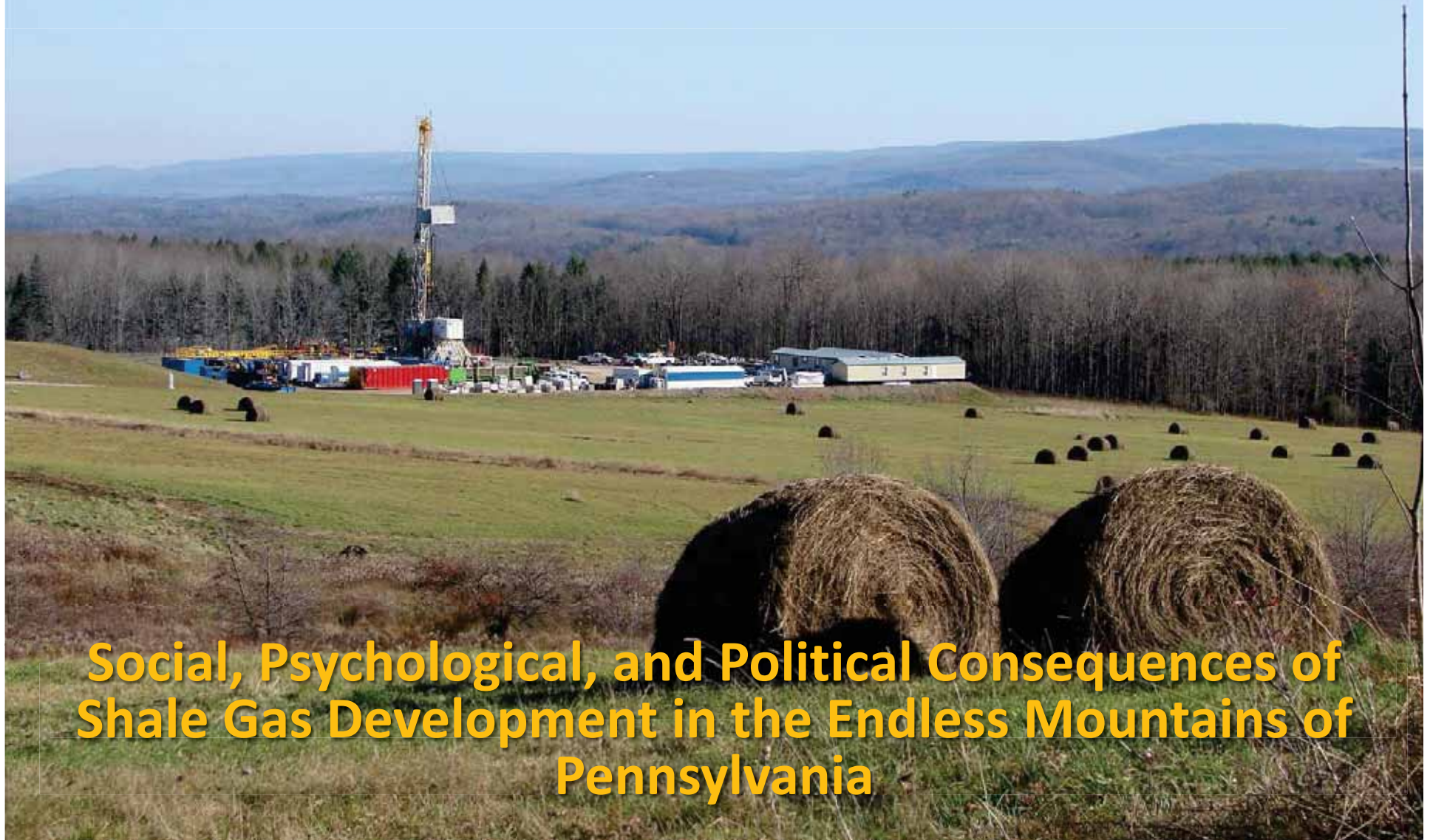


“A Home Worth Fighting For”



Social, Psychological, and Political Consequences of Shale Gas Development in the Endless Mountains of Pennsylvania

APRIL 22, 2011

Libya's Civil War

A GRAVE SCANDAL AT ARLINGTON

People
Power for
Palestine
BY JOE FLESH

BATTER UP!
YOUR GUIDE
TO THE 2011
BASEBALL
SEASON

The last great
work of David
Foster Wallace
BY LEV GROSSMAN

TIME

ENVIRONMENT SPECIAL

**THIS ROCK
COULD
POWER
THE
WORLD**

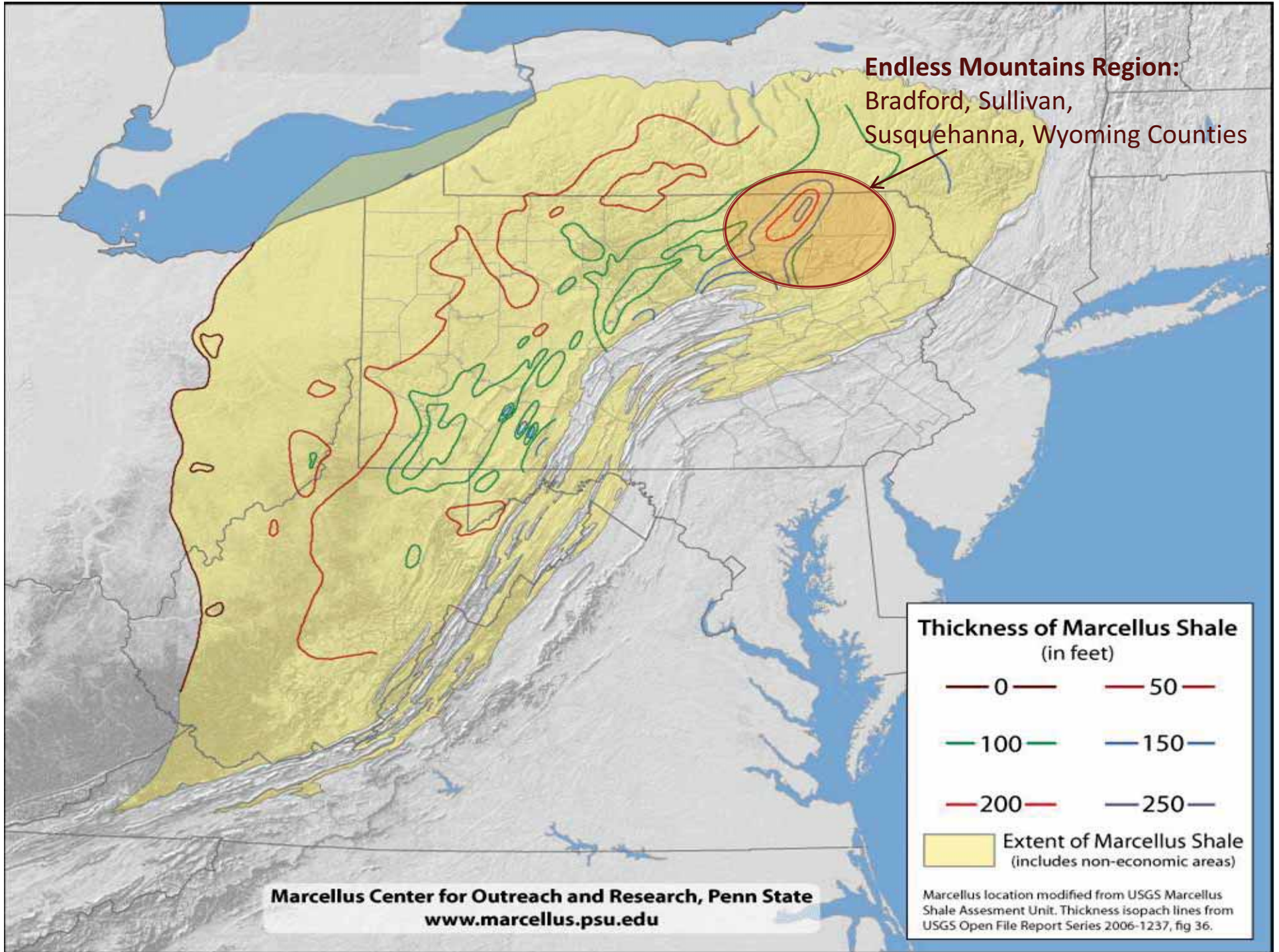
WHY SHALE CAN SOLVE
THE ENERGY CRISIS

BY BRYAN WALSH

A century's
worth of
waste is
buried in our
backyards ...

... but drilling
for it threatens
our food

WWW.TIME.COM

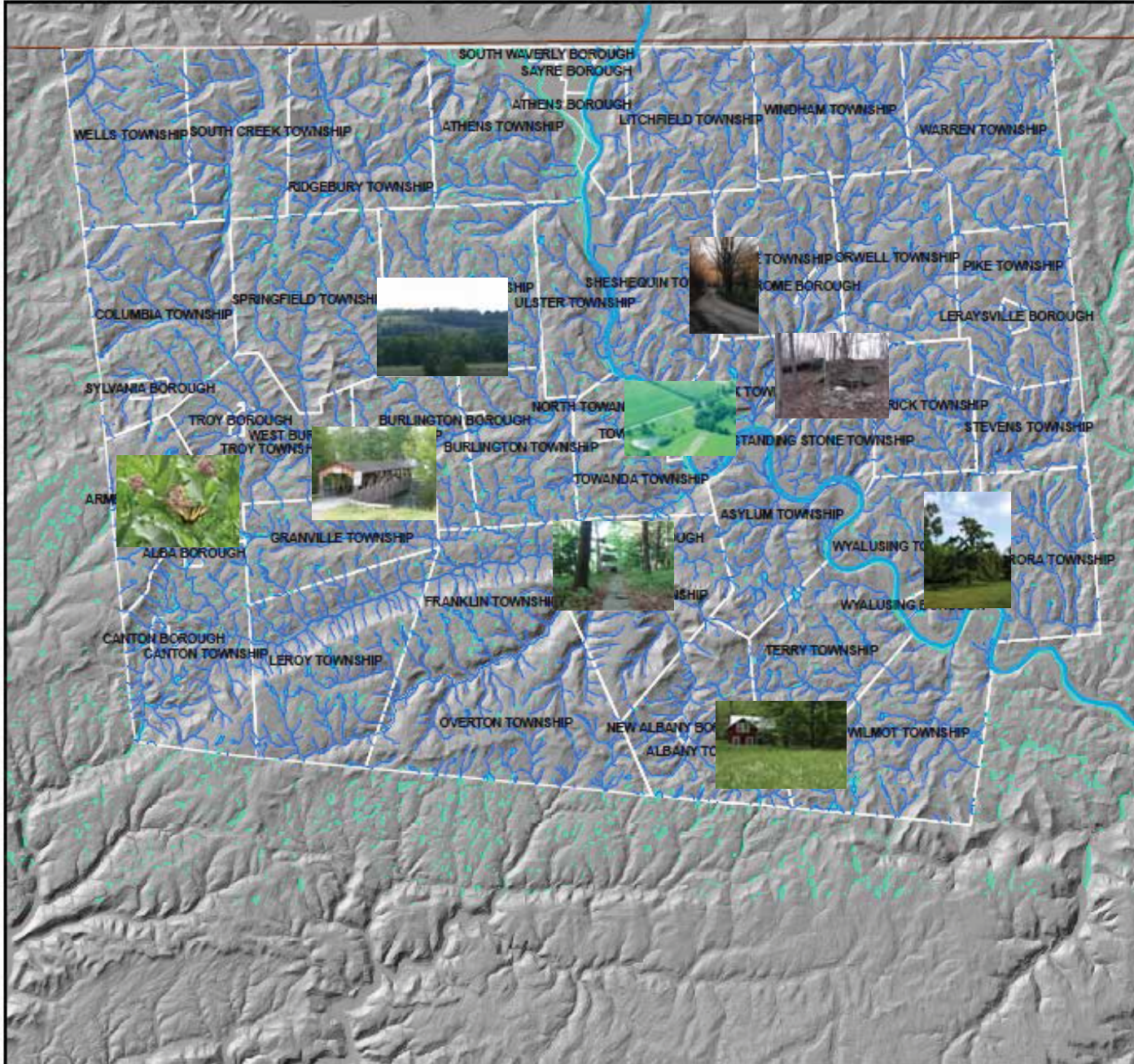


John Cole
© 2011 THE TRIBUNE
SUNSHINE, PA
COLUMBIAN, PA




DON'T WORRY...
THE LOCALS
TOLD ME I WAS
WASTING MY TIME,
TOO.



Bradford County Water Features: Susquehanna River, PA Streams, USFWS Wetlands



Legend

-  Susquehanna River
-  PA Streams Database
-  USFWS Designated Wetlands

Bradford County receives approximately 15 inches of rain per year and boasts over 4,000 miles of above-ground springs, creeks, and river-ways.

Base map is 3.2 ft DEM (Digital Elevation Model) from LiDAR (Light Detection and Ranging) elevation points created by DCNR PAMAP Program, 2006-2008.



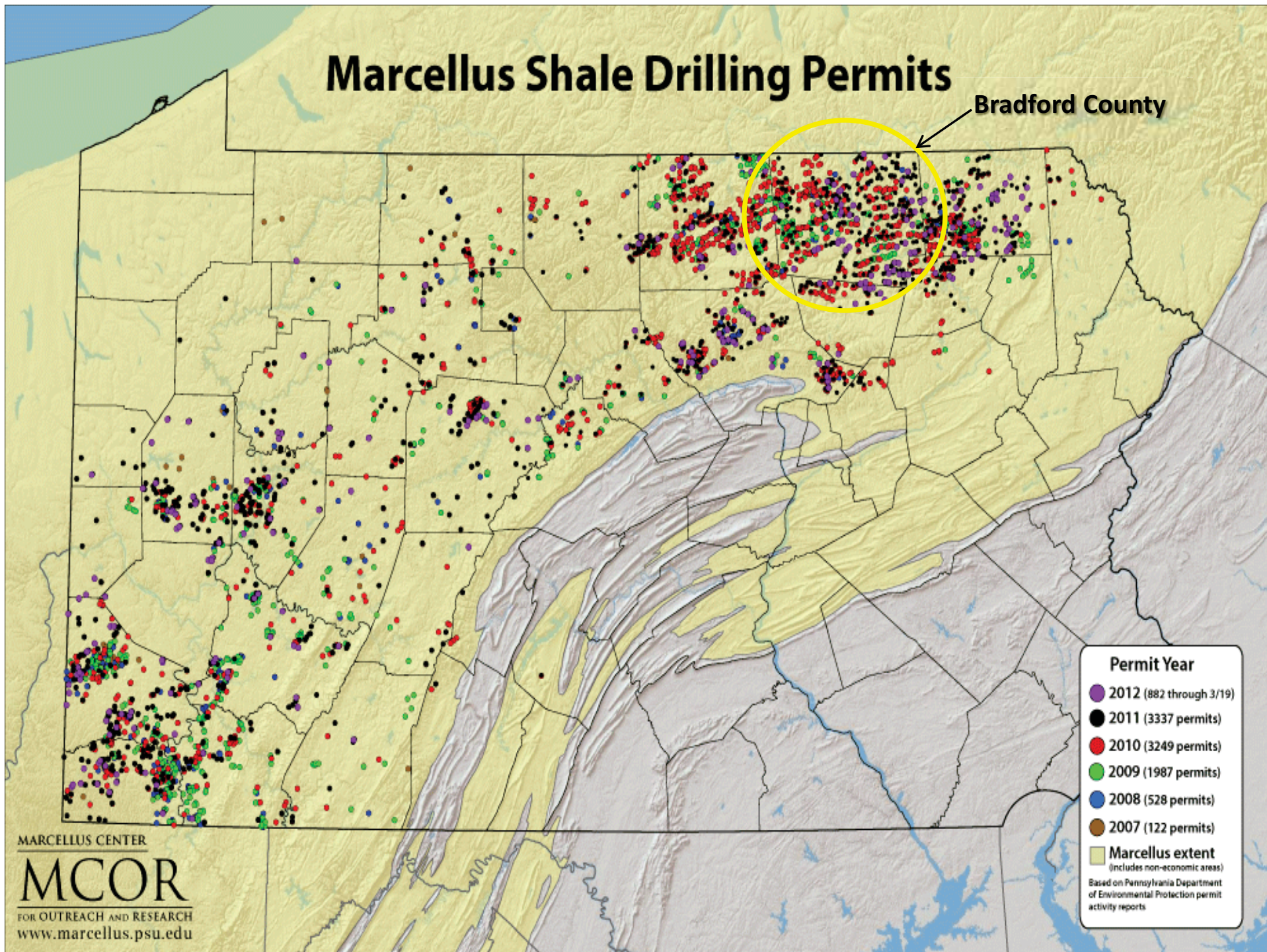
Landowner Meeting in Pennsylvania



Michael Henninger

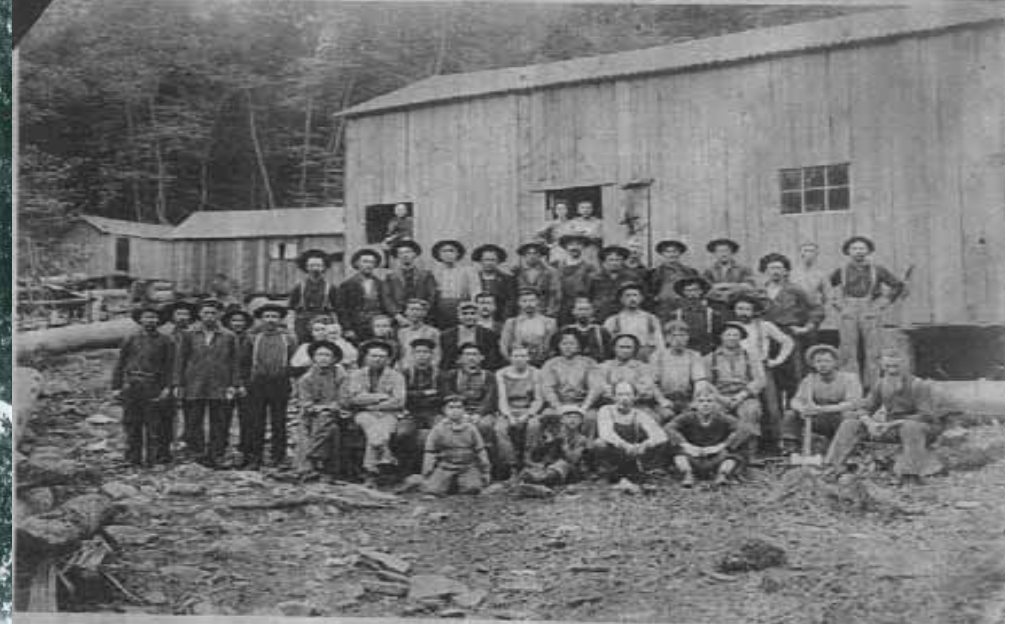
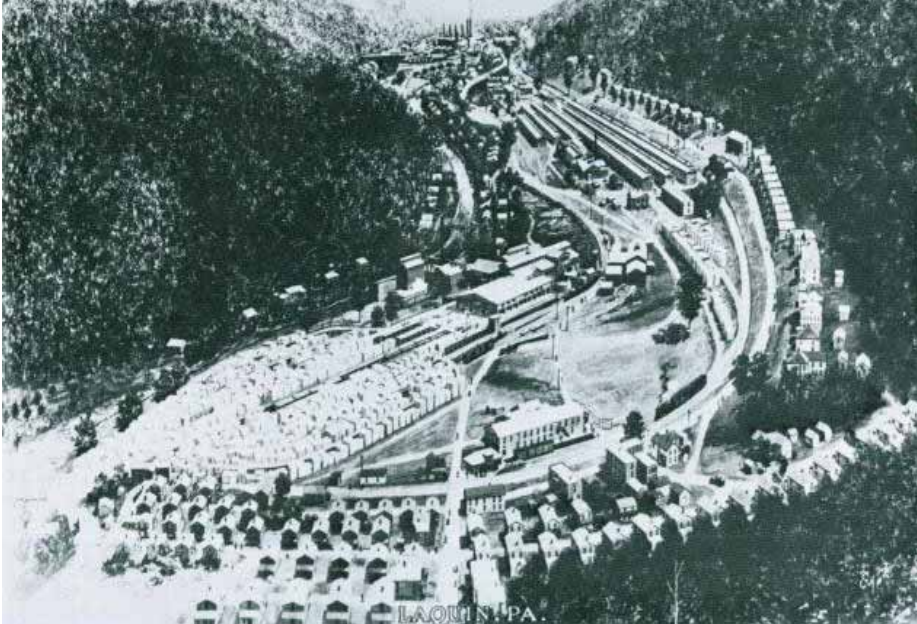
Marcellus Shale Drilling Permits

Bradford County





Bradford County: Agriculture, Lumber, Hard-Rock Mining, Coal



Towanda Borough, Bradford County, PA
2008



Table 1. Bradford County demographic overview pre-2008. (Sources: US Census Bureau 2009, Bradford County 2004, Bradford County 2009, USDA 2009.)

Total Population, 2009	61,375 people
Total Land Area	740,897 acres
Land in Agriculture, 2007	267,000 acres
Land in Forest, 2007	388,048 acres
Population Density, 2000	55 people/mi ² (rural)
Population Growth Rate, 2000-2009	-2.6%
Percent Population Identifying as White, 2000	97.5%
Median age, 2005-2009	42.4 years
Median household income, 2005-2009	\$39,242
Families below poverty, 2005-2009	11.2%
Leading employment by sector, 2004	Manufacturing (1 in 10 jobs in the forest products industry) Education, health, and social services
Leading revenue by sector, 2004	Agriculture (dairy and veal)







THANK GOD FOR
NATUAL GAS
WORKERS





Sue Heavenrich



Towanda Daily Review, 2011

Red "Hometown Heroes" banners were hung in downtown Towanda for two years (2008-2011). The name of the family who paid for the banners was placed on the bottom.

It's our patriotic duty...



Towanda Daily Review, 2011

New blue banners paid for by a local gas company replaced the old banners in 2011. The name of the family was replaced by the gas company logo on the bottom of the banners.

Sign put up May 2011 in East Smithfield, Bradford County, PA





Roads & Traffic: Safety, Air Quality, Noise



Dirt road in Bradford County destroyed by heavy natural gas industry traffic during Spring thaw. (Obtained from PennDOT District 4)

Water Quality Changes



Skin Rashes



Loss of Agricultural and Forest Land in Bradford County, PA

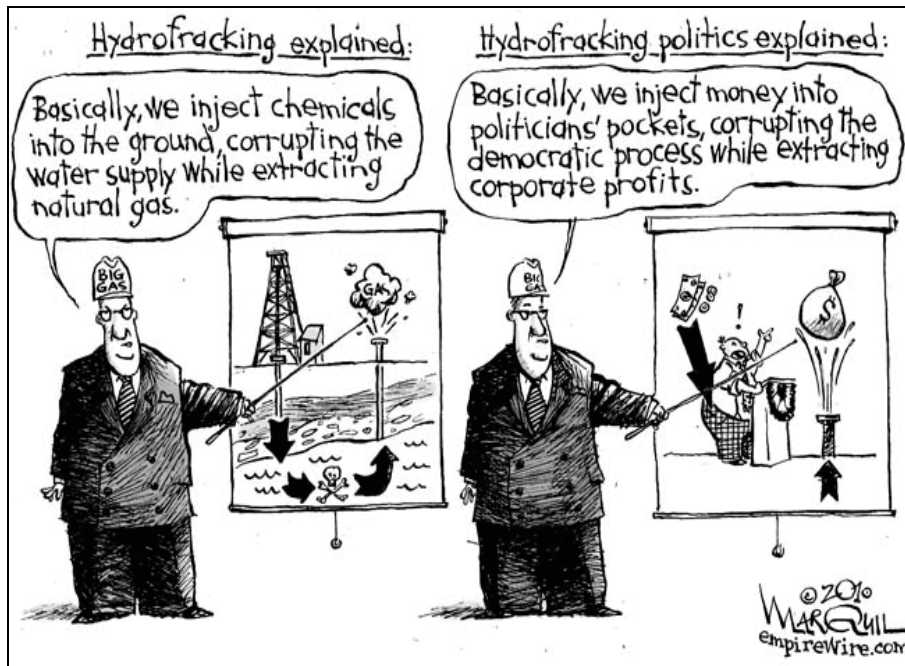
2008



2011







Collective Trauma



“a blow to the basic tissues of social life that damages the bonds attaching people together and impairs the prevailing sense of communality”

“works its way slowly and even insidiously into the awareness of those who suffer from it.”

“It does not have the quality of suddenness normally associated with trauma, but it is a form of shock all the same.”

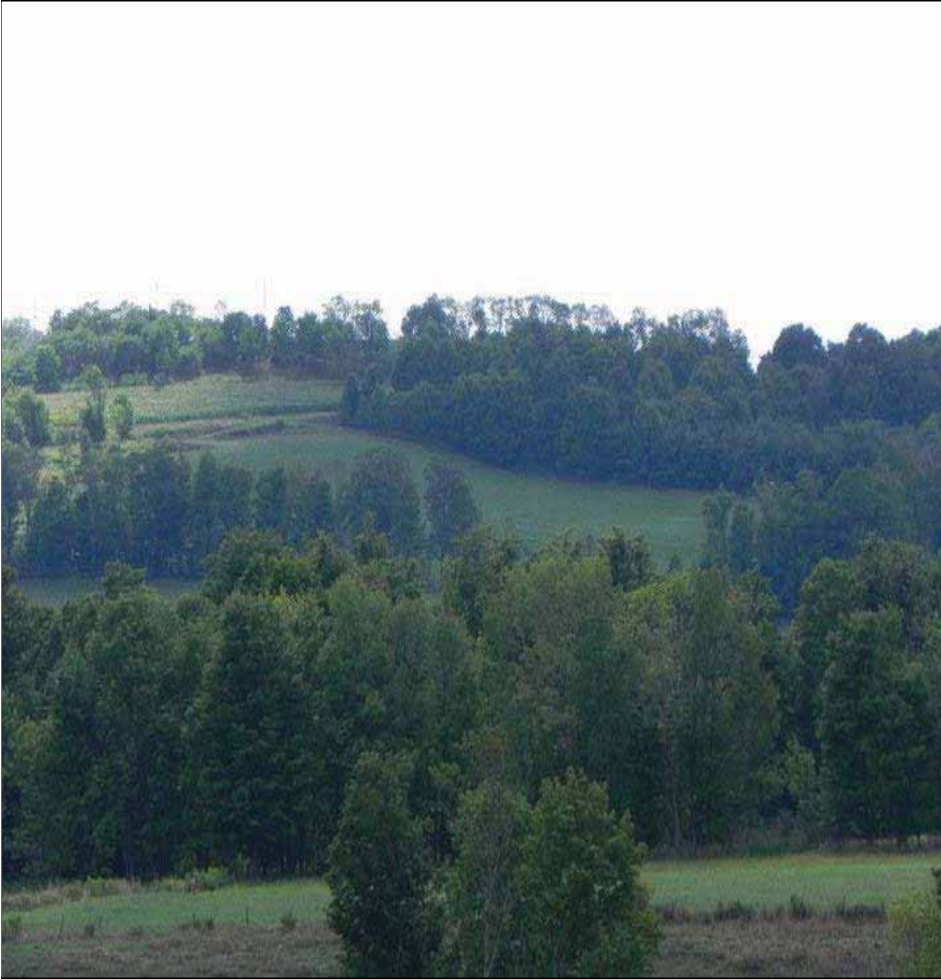
Kai Erikson, Everything in its Path: Destruction of Community in the Buffalo Creek Flood (1976)



“In a catastrophic age, trauma itself may provide the very link between cultures: not as a simple understanding of the pasts of others but rather, within the traumas of contemporary history, as our ability to listen through the departures we have all taken from ourselves.”

Cathy Caruth writing about the debates within psychiatry, psychoanalysis, and sociology regarding the diagnosis, definition, and representation of trauma in [Trauma: Explorations in Memory](#) (1995).

Kingsley Farm



Before well pad.



During well pad construction.

Asylum Township, Bradford County, PA
2009



Thank You!

Funding and resources for this project were provided by Dickinson College's Community Studies Center and Center for Sustainability Education and a post-doctoral grant from the Mellon Foundation.

Gratitude and thanks to the many people of Bradford County who spent long hours at kitchen tables, in conference rooms, and on the road with me telling me their stories and sharing their lives. And, to Jordan Haferbier, Vinca Krajewski, and Manuel Saralegui for technical assistance and field support. And, finally, the staff in the Bradford County Conservation District and the County Planning Office for their continuing support and encouragement of this research.

Contact Information

Simona L. Perry, PhD

c.a.s.e. Consulting Services

9810 Dairyton Court

Montgomery Village, MD 20886

Phone- 240.599.6655

Email- communitypower.slp@gmail.com